



LED Sign Module



LED Super Tiny Strip



LED Accessories



LED Power Supply

MAXBrite

LED LIGHTING TECHNOLOGY

LED WATERPROOF MODULE



POLAR SERIES «

LED Type: 5050 SMD
Working Voltage: 12V DC
Consumption: 0.50 W / module
Viewing Angle: 120°
Luminous Flux: 124 lm / ft.
IP Rate: IP66
Color: R,G,B,Y, WHITE 4500k - 7000k
Dimension: 1-3/4" x 5/8" x 1/4"
Warranty: 5 year

LED WATERPROOF MODULE



POLAR E2 SERIES «

LED Type: 2835 SMD
Working Voltage: 12V DC
Consumption: 0.72 W / module
Viewing Angle: 120°
Luminous Flux: 132 lm / ft.
IP Rate: IP66
Color: PURE WHITE 7000k
Dimension: 1-3/4" x 9/16" x 3/16"
Warranty: 5 year

RGB POLAR SERIES «

LED Type: 5050 SMD
Working Voltage: 12V DC
Consumption: 0.50 W / module
Viewing Angle: 120°
Luminous Flux: 80 lm / ft.
IP Rate: IP66
Color: RGB
Dimension: 1-9/16" x 3/4" x 1/4"
Warranty: 3 year



POLAR E3 SERIES «

LED Type: 2835 SMD
Working Voltage: 12V DC
Consumption: 0.72 W / module
Viewing Angle: 120°
Luminous Flux: 132 lm / ft.
IP Rate: IP66
Color: PURE WHITE 7000k
Dimension: 2-1/2" x 9/16" x 3/16"
Warranty: 5 year



The Aladdin System



- Powered with the Latest SMD Technology
- Versatile Lighting for a Variety of Applications
- Illuminates Evenly for Uniform Light Distribution
- Creates a Bright Display with No Hot Spots
- Aluminum PCB with a Conformal Coating for Element Protection
- Indoor/Outdoor Rated, Dry and Damp Locations
- 5 Year Manufacturer Warranty

The Aladdin LED System by MaxBrite, uses the latest in LED Technology and is the ultimate solution for back-lighting large areas vs. using traditional fluorescent lighting. The Aladdin System produces high quality backlit illumination evenly to the surface with a variety of depths. (Minimum distance of 1-1/2" from the LED to the surface)

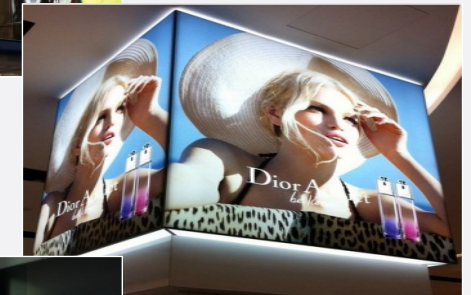
The Aladdin System is the ONLY system in the market place which can be CURVED and cut down to size. Elements can be added or subtracted from the linkable modules for the most customized product available. The Aladdin System has three different series to give you the most flexibility which includes *The Nano*, *The Standard* and *The XL*.

This high lumen, low current LED surface mounted technology will provide a variety of benefits including a great look and a cost effective product with superior efficiency. The Aladdin LED modules consume less than HALF the power of fluorescent illuminated sign systems. The Aladdin System is also the most efficient option with an average life span of 50,000 hours of constant illumination.

Applications



Benefit



Save Energy



SUPER TINY STRIP SERIES

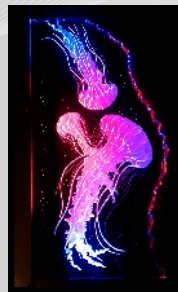
FRONT VIEW 12" STRIP <<

LED Type: 3528 SMD
Working Voltage: 12V DC
Consumption: 1.68 W / ft.
Luminous Flux: 116 lm / ft.
Viewing Angle: 120°
IP Rate: IP24, IP 54
Color Temperature: 3000K - 7000K
Dimension: 12" x 0.20" x 0.09"
Warranty: 3 year



FRONT VIEW 16ft. REEL <<

LED Type: 3528 SMD
Working Voltage: 12V DC
Consumption: 26.88 W / reel
Luminous Flux: 1840 lm / reel
Viewing Angle: 120°
IP Rate: IP24, IP 54
Color Temperature: 3000K - 7000K
Dimension: 192" x 0.20" x 0.09"
Warranty: 3 year



SUPER TINY STRIP SERIES

SIDE VIEW 16ft. REEL <<

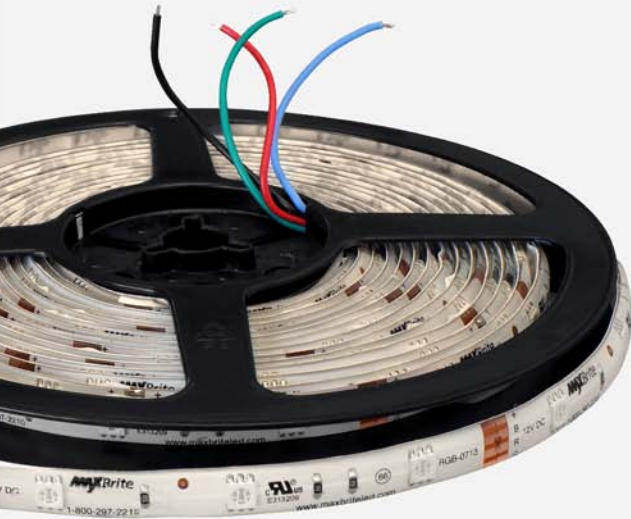
LED Type: 0335 SMD
Working Voltage: 12V DC
Consumption: 26.88 W / reel
Luminous Flux: 1840 lm / reel
Viewing Angle: 120°
IP Rate: IP24, IP 54
Color Temperature: 3000K - 7000K
Dimension: 192" x 0.20" x 0.09"
Warranty: 3 year



SIDE VIEW 12" STRIP <<

LED Type: 0335 SMD
Working Voltage: 12V DC
Consumption: 1.68 W / ft.
Luminous Flux: 116 lm / ft.
Viewing Angle: 120°
IP Rate: IP24, IP 54
Color Temperature: 3000K - 7000K
Dimension: 12" x 0.20" x 0.09"
Warranty: 3 year



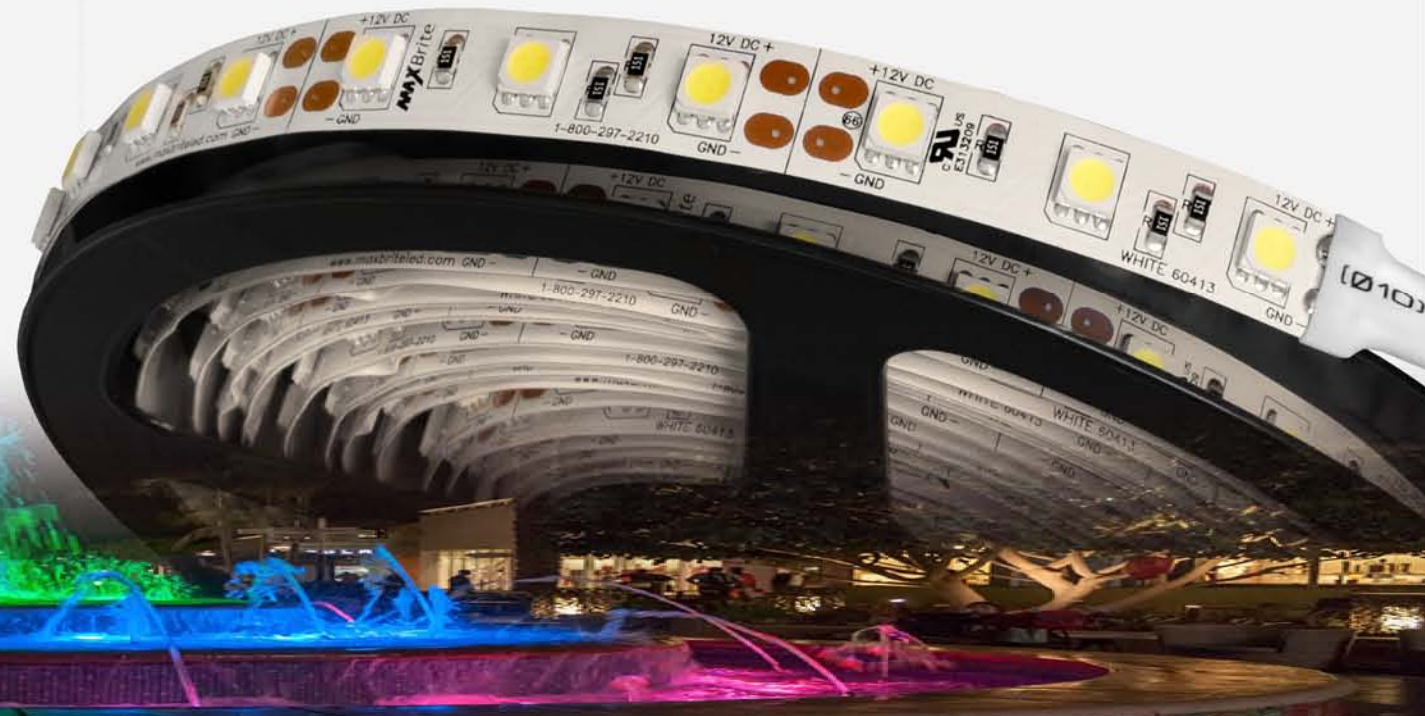


RGB RIBBON STRIP 5 METER REEL «

LED Type: 5050 SMD
Working Voltage: 12V DC
Consumption: 36 lm / 150 leds reel, 72 lm / 300 leds reel
Luminous Flux: 3150 lm / 150 leds reel, 6300 lm / 300 leds reel
Viewing Angle: 120°
IP Rate: IP24 / IP65
Color: RGB
Dimension: 196-3/4" x 7/16" x 5/32"
Warranty: 3 year

RIBBON STRIP 5 METER REEL «

LED Type: 5050 SMD
Working Voltage: 12V DC
Consumption: 36 lm / 150 leds reel, 72 lm / 300 leds reel
Luminous Flux: 3150 lm / 150 leds reel, 6300 lm / 300 leds reel
Viewing Angle: 120°
IP Rate: IP24 / IP65
Color: R, G, B, WHITE 6000-7000K
Dimension: 196-3/4" x 7/16" x 5/32"
Warranty: 3 year



LED CONTROLLER and DIMMER

RF INDOOR DIMMER ⏪

Supply Voltage: 12/24V DC
 Output Power: 12V<96W
 Max Current Load: 8A+/-
 Dimension: 4-9/16" x 2-1/4" x 1-3/8"
 Net Weight: 3.52 oz

Warranty: 1 year



RGB RF CONTROLLER ⏪

Supply Voltage: 12VDC
 Output Power: 12V<144W
 Max Current Load: 8A/ color
 Dimension: 4" x 2-1/2" x 15/16"
 Net Weight: 5.22 oz

Warranty: 1 year

RGB OUTDOOR AMPLIFIER ⏪

Supply Voltage: 12-24VDC
 Output Power: three CMOSdrian-open
 Max Current Load: 4A/ color
 Dimension: 3-3/4" x 2" x 1-3/16"
 Net Weight: 6.17 oz

Warranty: 1 year



RGB SYNC CONTROLLER and RECEIVER

WIRELESS SYNC REMOTE CONTROLLER ⏪

Supply Voltage: 5V DC Built-in Lithium Battery
 Working Current: <30mA
 Working Frequency: 2.4 GHz
 RF Remote Distance: 100 feet
 Remote Option: Sync Control Unlimited Receivers
 Change Mode: 32 Fantastic Modes
 Dimension: 5-3/4" x 2-3/16" x 7/8"
 Net Weight: 9.60 oz

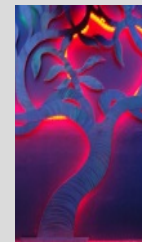
Warranty: 3 year



WIRELESS SYNC RECEIVER ⏪

Supply Voltage: 12-24V DC
 Output Power: 216W/432W (12V/24V)
 Max Current Load: 5A / channel
 Max Output Power: 180W/360W (12V/24V)
 PWM Frequency: 480 Hz
 Receiver Button: 8 Touch Button
 Dimension: 8-5/16" x 1-1/2" x 1-3/16"
 Net Weight: 8.0 oz

Warranty: 3 year



CUSTOM OEM PRODUCTS

MaxBrite's cutting edge research and development team can turn your project from concept to reality with incredible speed. We begin by creating a photorealistic 3D design model, then create a physical prototype for client approval. Our prototype capabilities can include custom PCBs, extrusions, 3D printing and more. Whether you need a simple LED strip with a unique pattern, an existing product with slight modifications, or an entire new architectural panel lighting system, MaxBrite is your one-stop solution.



HIGH POWER WALL WASH LED LIGHT

HEAVY DUTY LED WALL WASH

Supply Voltage: 100-277V AC
 Output Power: 40W, 50W & 80W
 LED Light Source: Bridgelux USA
 LED Efficiency: >95lm/W
 Viewing Angle: 120°
 Dimension: 14-1/2" x 11-1/2" x 8-7/8"
 Net Weight: 21.00 +/- lbs.

Warranty: 3 year



RGB RF LED WALL WASH

Supply Voltage: 100-277V AC
 Output Power: 40W, 50W & 80W
 Luminous Flux: 4000 lm, 4500 lm, 7640 lm
 LED Light Source: Bridgelux USA
 Viewing Angle: 120°
 Dimension: 14-1/2" x 11-1/2" x 8-7/8"
 Net Weight: 21.00 +/- lbs.

Warranty: 3 year

LED LINEAR LIGHT

LED Light Source: 5730 SMD
 Working Voltage: 12V DC
 Consumption: 18W, 24W & 36W
 Viewing Angle: 120°
 IP Rate: IP68
 Dimension: 1" x 1-1/4" x 24- 48" L
 Net Weight: 2.00 - 3.53 lbs.

Warranty: 3 year



LED RETROFIT PRODUCTS

LED FLUORESCENT LAMP

Input Voltage: 100-277V AC
 Output Power: 10W, 15W & 20W
 LED Light Source: 2835 SMD
 LED Efficiency: >98lm/W
 Viewing Angle: 180°
 Dimension: 1" x 2ft. 3ft. and 4ft. (L)

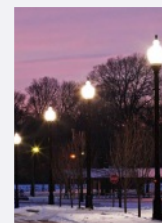
Warranty: 5 year



LED CORN LIGHT BULB

Input Voltage: 100-277V AC
 Output Power: 27W to 120W
 LED Light Source: High Power Samsung SMD
 LED Efficiency: >120lm/W
 Viewing Angle: 360°
 Mounting Base: U.S. E26 / E39

Warranty: 5 year





GAS STATION CANOPY LIGHT «

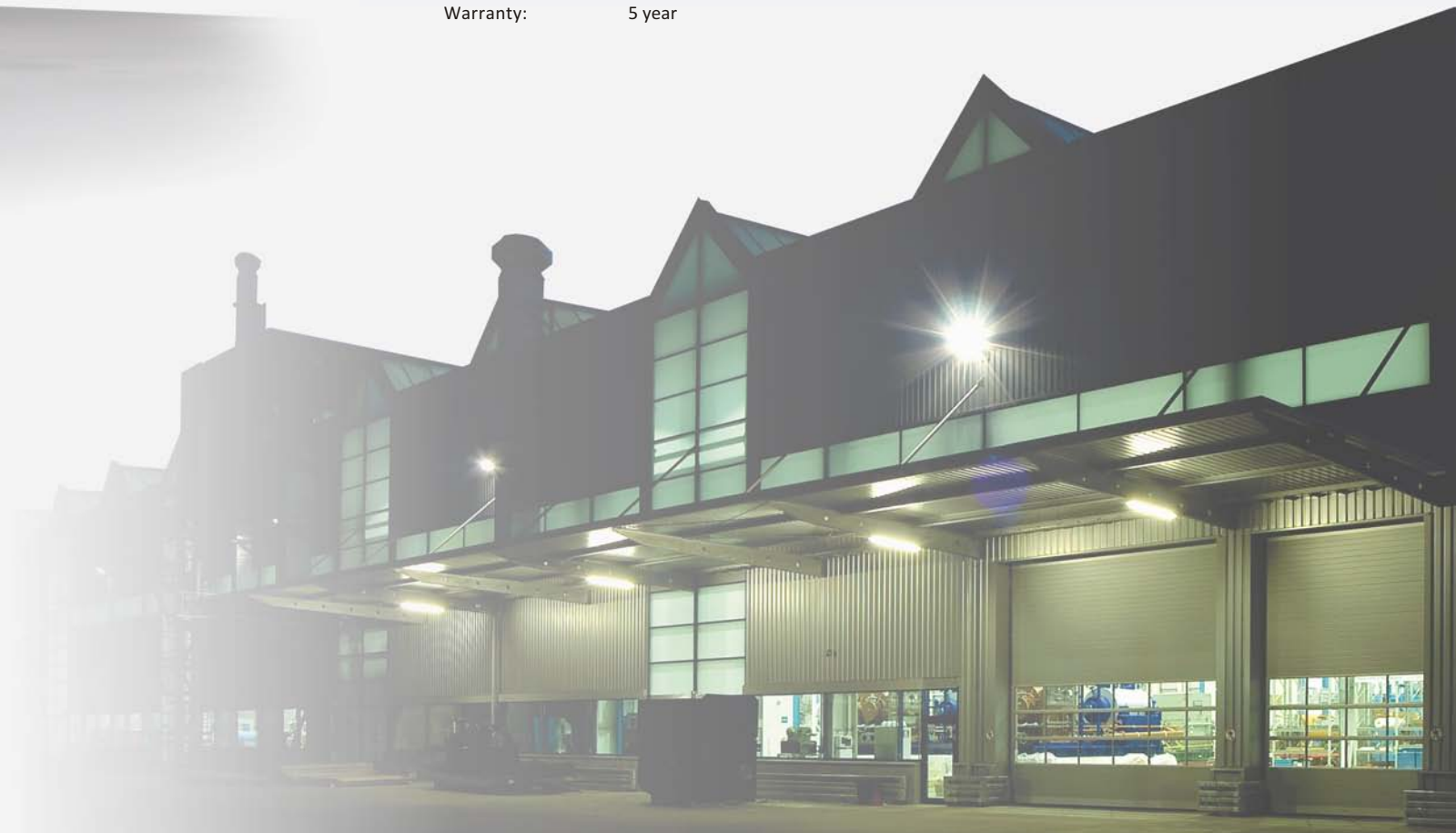
Supply Voltage: 100-277V AC
Output Power: 100W, 130W & 150W
LED Light Source: Epistar High Power LED
Luminous Flux: 11,000-16,500 lm
Viewing Angle: 110°
Lifespan: 50,000 hours
Color Temp: 5,700K

Warranty: 5 year

WALL PACK «

Supply Voltage: 100-277V AC
Output Power: 30W - 120W
LED Light Source: Epistar High Power LED
Luminous Flux: >2,100-8,600 lm
Viewing Angle: 110°
Lifespan: 50,000 hours (L70)
Color Temp: 5,700K

Warranty: 5 year



HIGH INTENSITY SHOEBOX «

Supply Voltage: 100-277V & 200-480V AC
Output Power: 150W - 320W
LED Light Source: Epistar High Power LED
Luminous Flux: >1,400-23,530 lm
Viewing Angle: 110°
Lifespan: 60,000 hour plus (L70)
Color Temp: 5,700K
Mounting Type: 2" Slip fitter (optional extended arm)

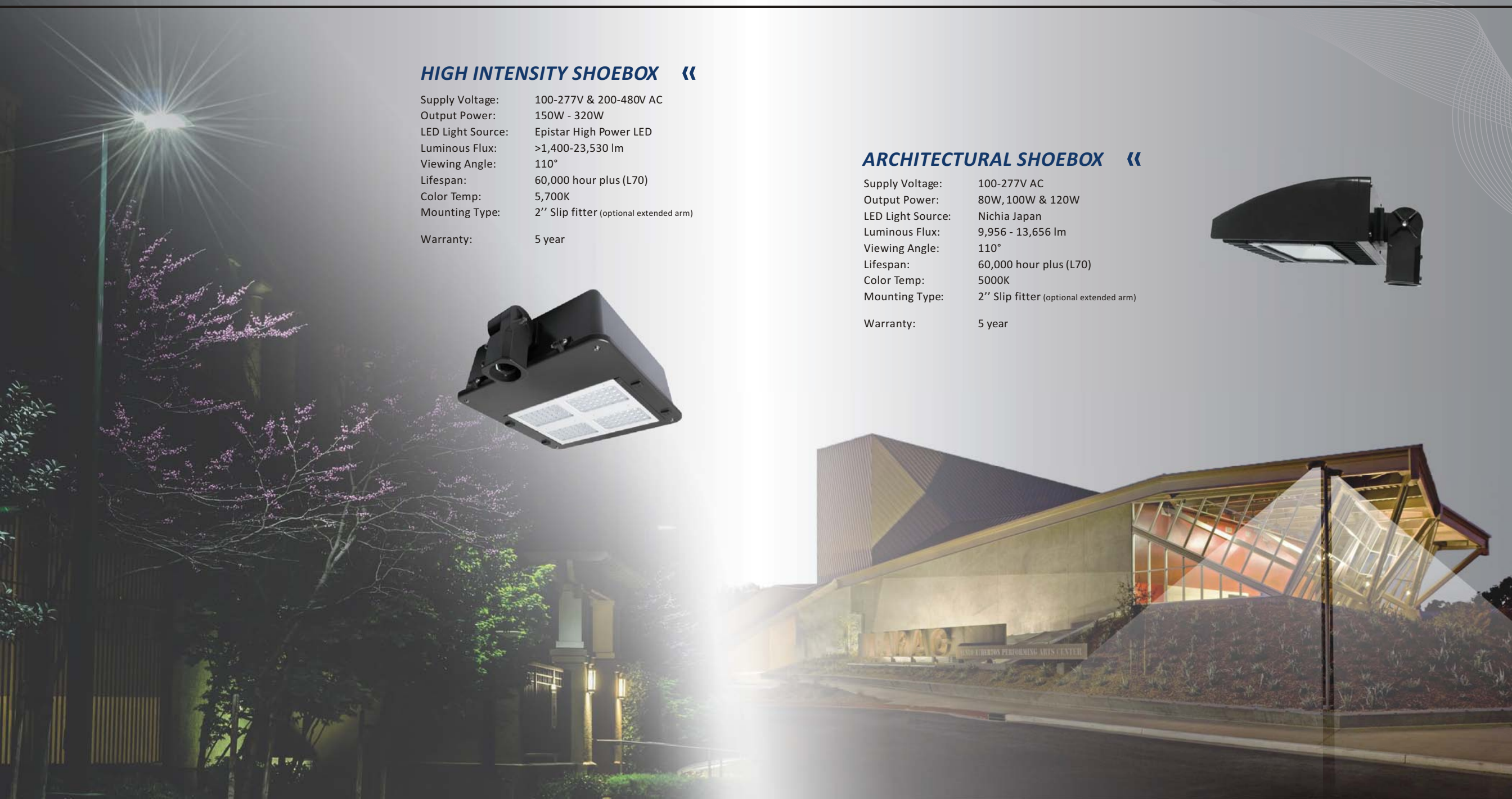
Warranty: 5 year



ARCHITECTURAL SHOEBOX «

Supply Voltage: 100-277V AC
Output Power: 80W, 100W & 120W
LED Light Source: Nichia Japan
Luminous Flux: 9,956 - 13,656 lm
Viewing Angle: 110°
Lifespan: 60,000 hour plus (L70)
Color Temp: 5000K
Mounting Type: 2" Slip fitter (optional extended arm)

Warranty: 5 year





HIGH POWER FLOOD LIGHT «

Supply Voltage: 100-277V AC
Output Power: 80W, 120W
LED Light Source: Nichia Japan
LED Efficiency: >110 lm/W
Viewing Angle: 110°
Mounting Type: 2" Slip fitter (optional extended arm)
Color Temp: 5,000K

Warranty: 5 year



HIGH POWER WALL WASH «

Supply Voltage: 100-277V AC
Output Power: 80W, 120W
LED Light Source: Nichia Japan
LED Efficiency: 75-80 lm/W
Viewing Angle: 82°-89°
Mounting Type: 2" Slip fitter (optional extended arm)
Color Temp: 5,000K

Warranty: 5 year



LED POWER SUPPLY

SLIM LINE SELF-CONTAINED SERIES ‹‹

Wattage: 20W, 30W and 60W
 Input Voltage: 100-277V AC
 Output Voltage: 12V DC
 Efficiency: 83%
 Certified: UL879, UL1310 Class 2
 IP Rate: IP67
 Dimension: Refer to Spec Sheet
 Warranty: 3 year



MULTI DRIVE COMPACT SERIES ‹‹

Wattage: 60W
 Input Voltage: 100-277V AC
 Output Voltage: 12V DC
 Efficiency: 83%
 Certified: UL879, UL1310 Class 2
 IP Rate: IP67
 Dimension: 7-1/4" x 2-1/4" x 1-7/16"
 Warranty: 3 year



MULTI DRIVE REMOTE SERIES ‹‹

Wattage: 60W
 Input Voltage: 100-277V AC
 Output Voltage: 12V DC
 Efficiency: 83%
 Certified: UL879, UL1310 Class 2
 IP Rate: IP67
 Dimension: 9-3/16" x 2-3/4" x 1-7/8"
 Warranty: 3 year



LED POWER SUPPLY

TRI POWER SERIES ‹‹

Wattage: 60W
 Input Voltage: 100-277V AC
 Output Voltage: 12V DC
 Efficiency: 83%
 Certified: UL879, UL1310 Class 2
 IP Rate: IP67
 Dimension: 7-7/16" x 1-11/16" x 1-5/16"
 Warranty: 3 year



POWER ADAPTER SERIES ‹‹

Wattage: 2A 24W
 Input Voltage: 100-240V AC
 Output Voltage: 12V DC
 Dimension: 3-3/8" x 1-7/8" x 1-3/16"
 Warranty: 1 year



POWER PLUG SERIES ‹‹

Wattage: 60W and 84W
 Input Voltage: 100-240V AC
 Output Voltage: 12-24V DC
 Warranty: 1 year



SIGN ACCESSORIES



HEAVY DUTY TOGGLE SWITCH «

Input Voltage: 125-277V AC
Current Load: 20 amps
Horse Power: 2 HP
Certified: UL SAM Manual
Dimension: 1-1/4" x 5/8" x 1-1/16"
Net Weight: 1.70 oz



Warranty: 1 year

LED PREMIUM CABLE «

18 AWG Stranded Wire
Pure Copper Conductor
In-Wall PVC Jacked
Certified: UL Class 2
Indoor/Outdoor Applications
Packages: 100' 200' and 500' Rolls



COMPANY PROFILE

MaxBrite LED Lighting Technology, LLC. was founded in 2006 and is based in San Jose, California. We are a leading LED manufacturer and our goal is to provide quality LED products, which meet strict quality guidelines, at an affordable price to fit your business needs.

We focus on manufacturing a wide range of LED products and accessories including high power LED lamps, flex strips, LED modules, fluorescents, recessed lights, power supplies, accessories and much more. By using the latest in cutting edge technology, MaxBrite LED produces high quality LED outdoor and indoor products for use in a variety of different applications. With customers spanning across the U.S., our products are used in a variety of different industries and we pride ourselves in helping our customers to establish a successful business.

Manufacturing

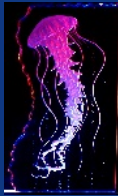


Assembly



Quality Assurance





MAXBrite

MaxBrite LED Lighting Technology, LLC - 1740-B Junction Ave. - San Jose, CA 95112
Toll Free: 1-800-297-2210 - Fax: 1-408-437-1602 | www.maxbriteled.com